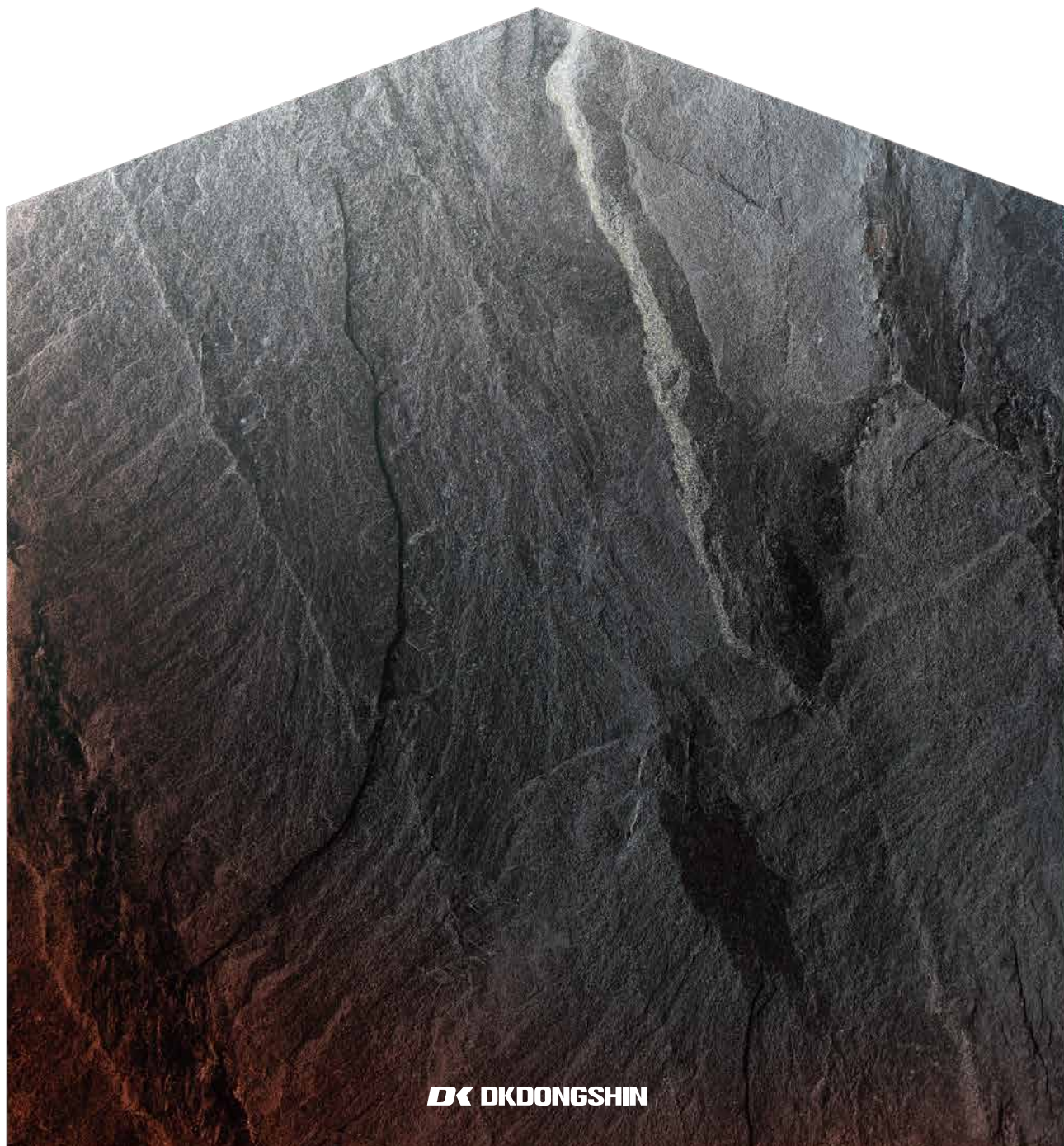


HAMMER-TONE

NEO-TEXTURE CONSTRUCTION MATERIAL



DK DKDONGSHIN

HAMMER-TONE

NON-FLAMED PRE-COATED METAL

ABOUT HAMMER-TONE

The Hammertone product blends wax and resin for a stable structure, offering variable texture sizes by painting thickness. It is a product at a reasonable price and has a non-monotonous appearance, excellent machinability and hardness, so it is widely used as a fire door.

APPLICATION



Interior design
material



Special Item
Fire-Door

PRODUCT OF CHARACTERISTIC



A textured finish adds depth, creating an elegant look even in solid colors.

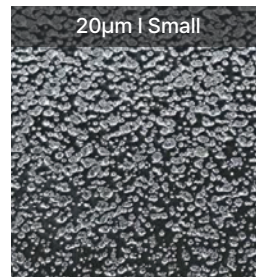


High-hardness product with superior surface durability, ideal for fire doors exposed to frequent scratching.

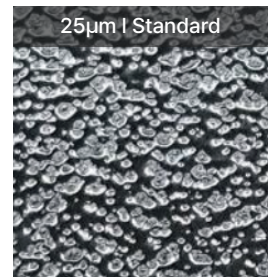


An eco-friendly product made with sustainable materials, designed to be recyclable.

COMPARE TO SURFACE



20µm I Small



25µm I Standard

*Due to the difference in coating layers, changes in the texture structure of the WAX components cause variations in the texture size

PRODUCT PROPERTY

Property	Measurement	Test Standards
MEK Resistance	Gauze, Repeatability	100 times ↑
Bending(Adhesion)	T-bend, Taping	1T No Crack, No Peel off
Pencil Hardness	Mitsubishi Pencil	2H
C.C.E.T	1mm / 6mm	No Peel off
Impact	1/2" x 50cm x 1kg	No Peel off
Corrosion resistance	35°C, 5% NaCl	No mark, No change
Chemical resistance	2% HCl / 2% NaOH	No Blister(Spot 24hrs)

* The above criteria may vary depending on the application, material, color, and gloss, requiring prior consultation

SEOUL OFFICE

10F, 46, Dadong-gil, Jung-gu,
Seoul, Korea
Tel : 82-2-3475-1893 Fax : 82-2-549-8340

HEAD OFFICE & FACTORY

154, Daesong-ro, Nam-gu, Pohang-si,
Gyeongsangbuk-do, Korea
Tel : 82-54-280-0211 Fax : 82-54-286-0176